



**1000 Series (Blazer) best practices. (1200/1125)**

- Author:** Simon Le Comte  
Senior Systems Engineer  
Wyse Technology  
Australia  
[slecomte@wyse.com](mailto:slecomte@wyse.com)
- Version:** 2.0 Released, current for Firmware revision 4.4  
**Date:** 7 July 2004
- Blazer version:** This document has specific settings to version 4.4.010i of the Wyse Blazer operating System. This the latest release of the operating system. I recommend that if using older firmware you upgrade to leverage all the newer features
- General Overview:** The “Blazer” operating system is a property operating system written by Wyse Technology and is still to date the fastest Windows Based Terminal operating system in the world, and is the amazing size of 497k. considering what the “Terminal” word means and we all remember green screens where Wyse came from, when you introduce the 1200LE you now have a device and simple as a green screen but far more smarter as you will learn from reading this document. This document is short and sweet and should provide you with all the information to have 1200/1125 unit automatically set itself up remotely, this process including reading this document and understanding my Australian “slang” should take no longer than one hour.
- Feedback:** Please send feedback and you comments to me so I can improve this so we can all see the benefits of Simple, secure Windows Based Terminals, enjoy!!!
- Legal Information:** This is not an “Official” Wyse document but rather a “best practices” document that I have put together to aid you the customer to ensure your deployment of the units are simple, secure and fast. As a Systems Engineer for Wyse technology I have consulted with my Australian workmates to be able to complete this and thank them for their hard work on this.

**Blazer Best Practices**

**Special thanks to:**

**Mark Economos:** Systems Engineer, Wyse Technology  
Australia. (VIC, SA, WA, ACT and TAS)  
Email: [meconomos@wyse.com](mailto:meconomos@wyse.com)

**Sora Cho:** Technical Support department, Australia/New  
Zealand.  
Email: [scho@wyse.com](mailto:scho@wyse.com)

**Wyse World Wide System Engineering team,** in all my time of working in IT this is the most important team I have ever had the presence of working with, there are two many of you to mention but without the group of brothers (and sisters) and our fearless leady Joan Johnson you would not find a more positive and dedicated team to growing and fostering the Windows Based Terminal market.

**Douglas A Brown:** Systems Engineer Citrix Systems US, I used to be a Systems Engineer for Citrix in 2001/2002 and we should all know Douglas's Project in a box document for Metaframe XP/Presentation server, although Doug and I never had the pleasure of meeting we often exchanged many emails late at night when first deploying Nfuse Elite (now called MSAM) and Doug's openness to sharing technical information with all ensuring we all gain from technology and deploying it right the first time as inspired me to start doing this whilst I am an employee of Wyse Technology.

Without their support and help this document would not be possible, **you guys rock!!!!!!!!!!**

**Setup options:** There are two ways of completing the configuration of the device; they are manual or automatic via FTP/Wnos.ini file. We will look at both options with the manual option being a basic follow you eyes type setup and the automatic way be a more detailed solution requiring a little more time.

**Manual Setup:** This is as simple as turning on the device and either using DHCP or static IP address and then configuring an ICA or RDP session. The only “gotcha” here is to avoid a delay in the boot process you should go to the network configuration and enter a FTP server IP address under “File Server Location” and this will enable the device during the boot process to contact a FTP server, check for a update version of the firmware and then run the connection you have configured.

**Update Process:** Which ever type of configuration you use, either DHCP, or static IP addressing the device will look for a FTP sever on boot. By default the device will look in the Ftproot/wyse/wnos folder and check for any new versions of the firmware. This file is called UTC\_b512 and is 497k in size. If you us DHCP this is set through DHCP custom options and is discussed below, if you are using static IP you will need to add this to the device manually. This is also discussed below.

**Real world Note:** *The FTP server can be Windows or UNIX/Linux based.*

**Static IP:** Using Static IP address is very easy.

- a. left click on the wyse desktop
- b. go to network setting
- c. add the information as required
- d. Under “file server location” and the FTP server IP address.
- e. If you Nfuse/Web Interface add the NFuse server IP address to the PNLite entry.

**DHCP Setup:** Before using the device we need to add a DHCP option so that the device can find the FTP server to obtain any newer versions of the operating system, this setup is also used to read a *wnos.ini* file which is a text file that the device will read and self configure. This will mean you will not need to do anything to the device but plug in it and turn it on; it will update itself and also read the configuration file and set itself up in under 10 seconds.

## **Blazer Best Practices**

- DHCP Options:** DHCP options are configured on Windows 2000 server in the below way.
- a. Open DHCP manager
  - b. Right click on the DHCP server
  - c. Go to “set predefined options”
  - d. Click the “add” button
- Option 161:** which is an IP Address, this should reference the FTP server on you network
- Option 162:** which is the root path to the FTP server, by default you do not need this **unless you wish to change the FTP path from /wyse/wnos** which is the predefined path, if you add the path to be /pub/folder then /wyse/wnos will be added to the end.
- Option 181:** IP address or DNS name of Nfuse/Web Interface server for the use of PNLite, this will enable PNAgent functionality on the device and allow the user to access there applications via the Web interface/Nfuse.
- Option 186:** IP Address of the Rapport HTTP management server, this will enable the device to “auto check in” to the Wyse Rapport Management server via HTTP for asset tracking and some great remote management features.
- Note:** Please read about Wyse Rapport Management software detail before installation and make sure you have the correct network ports open an a good understanding of Microsoft Windows 2000 and Network infrastructure.*
- FTP setup:** You will need to make two folders in the root of the ftp server that you are using, one called Wyse and one under the Wyse folder called wnos. This will mean the structure of you ftproot should be as follows ftproot/wyse/wnos.
- Bitmap folder:** You can also add another folder called “bitmap” under the Wyse folder eg: Ftproot/wyse/bitmap. This is used to reference any bitmap’s or default backgrounds that you wish to have.  
**See:** section on wnos.ini file commands for more information.
- Firmware File:** The Blazer operating system firmware file is called UTC\_b512 for the 1200 and for the 1125SE there are two files. (TWA\_WNOS and TWA\_boot) These files must sit in the /wyse/wnos folder and will be used to keep you fleet on 1200/1125 units up to date as required. Wyse update this firmware which adds new features about every 6 months, this is a free update and to be notified via email of any new updates you should visit <http://support.wyse.com/1000Series/index.htm> and then following the link to be email new firmware updates.

**Extras:**

There are two main extra options in regards to connectivity and there are as follows:

- a. Dial Up Manager
- b. PPTP Manager

**Wnos.ini file**

Wnos.ini file is used to set two areas on configuration for the device; this is a text file written in notepad and called the above reference. The two areas it configures are the global settings such as screen size, colours, background and security and the second area is the connection setting to ICA or RDP.

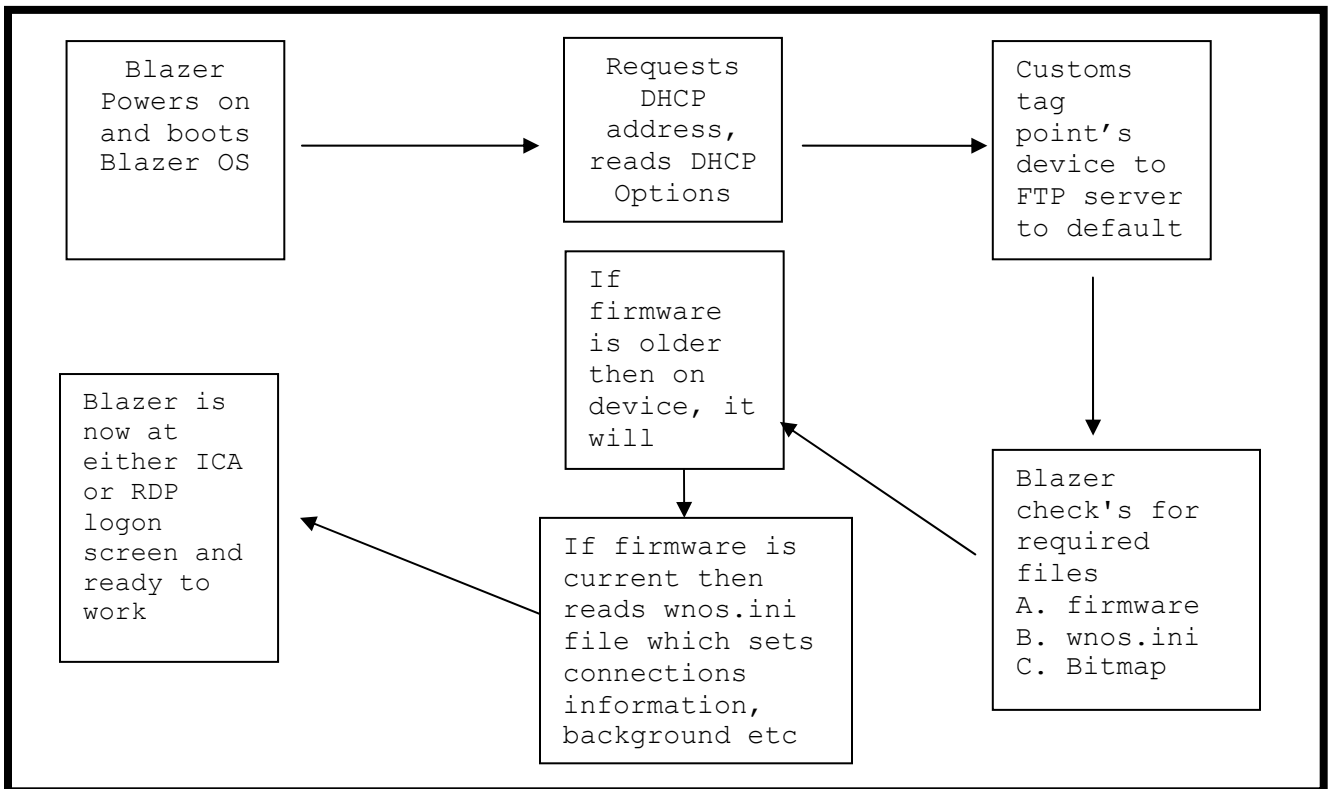
Once we have configured the above the below flow on communication will happened and then the device will not need any configuration by you manually apart from someone plugging the device in

**Real world Note:**

*Plugging the device in is simple as only one part matches each plug at the rear of the device, IE: network cable, VGA and keyboard, no way of confusing this so a user can do this without issue.*

**Flow of communication Chart**

*(The entire process should take on a LAN less then 10 seconds)*



## **Blazer Best Practices**

**Real world note:** There is to date no other device in the world that is even similar to this device, Wyse Blazer is the only ICA/RDP appliance in the world, this has enable many business in the world simply to be able to send the device to the site and ask the end user (serious here) to plug it in and turn it on, Blazer then auto configures via the DHCP options/wnos.ini file and the business is running immediately. Current Wyse Customers from the CIO, CFO and IT managers down cannot only appreciate this benefit to the business in time taken to complete a rollout and replacement but this has a major impact to the bottom line of the business, savings thousands in management cost over many years with limited staff to support this, allowing desktop management people to be better deployed in the business.

### **Wnos.ini files in depth**

The wnos.ini file is very simple and has only basic rules of scripting and can be completed in as little as a few lines of text in less than 5 minutes. There are many options than can be configured and below is a sample ini file. There are two main parts to this text file, the first being the global settings for updates, desktop colour security etc and the second being the “actual” ICA or RDP settings. You don’t have to set the ICA settings if you wish as you can leverage the NFuse Server buy adding a list of NFuse servers to the global settings or a DHCP option 181 which is the IP Address of the NFuse server.

#### **Sample wnos.ini file**

```
# wnos.ini – Created by Simon Le Comte for ABC company
# Wnos.ini file for use with firmware version 4.4.010i
Autoload=1
Resolution=1024x768
DeskColor="000 000 000"
Privilege=None Lockdown=Yes
# ICA client stuff (note: needs line continuation character \)
Connect=ica \
    browserip=10.0.0.1, 10.0.0.2 \
    application=Desktop \
    fullscreen=yes \
    autoconnect=1
```

The above is a simple outline of the wnos.ini file and how it can be used to set both the global settings (Winterm Settings) and the connection setting either for RDP or ICA.

There are a few basic rules when writing a wnos.ini file.

1. Keep it simple and don’t complicate the setup
2. Use “#” to add comments and now command line and make sure there is no space at the end of each line
3. Ensure when adding the connection setting via ICA that you add a space then \ at the end of each line to be read, this means that there is more code for the device to read on the next line. Failure to and the space and \ will mean that the device will not read the next line of you settings. Also you last line of code does not need to have the “\” added. See above in the sample file for more information.

## ***Blazer Best Practices***

### Appendix A:

Shows all possible attributes to the wnos.ini file and show be used to offer the best possible setup of the blazer operating system.

## Appendix A

| AutoLoad={0, 1, 2}                | <p>Selects firmware update mode:</p> <table> <thead> <tr> <th><u>Value</u></th> <th><u>Action</u></th> </tr> </thead> <tbody> <tr> <td>0</td> <td>Disable checking for image</td> </tr> <tr> <td>1 (default)</td> <td>Enable firmware upgrade/downgrade process</td> </tr> <tr> <td>2</td> <td>Enable upgrade only</td> </tr> </tbody> </table> | <u>Value</u> | <u>Action</u> | 0 | Disable checking for image | 1 (default) | Enable firmware upgrade/downgrade process | 2 | Enable upgrade only |
|-----------------------------------|---|--------------|---------------|---|----------------------------|-------------|---|---|---------------------|
| <u>Value</u>                      | <u>Action</u>   |              |               |   |                            |             |   |   |                     |
| 0                                 | Disable checking for image  |              |               |   |                            |             |   |   |                     |
| 1 (default)                       | Enable firmware upgrade/downgrade process   |              |               |   |                            |             |   |   |                     |
| 2                                 | Enable upgrade only   |              |               |   |                            |             |   |   |                     |
| FileServer={IP address, DNS name} | This FTP server IP address or DNS name is entered into Thin Client local setup (non-volatile) and the Thin Client immediately uses this server to access files. Note that the target file server must support access using the same user ID as there is no way to change user ID and/or password in the ini files.                              |              |               |   |                            |             |   |   |                     |
| RootPath=FTP root path            | This FTP root path is entered into Thin Client local setup (non-volatile) and the Thin Client immediately uses this path to access files. The directory name \wnos will be appended to the FTP root path entry before use.  |              |               |   |                            |             |   |   |                     |
| SignOn={1, 0}                     | Yes/no choice to enable the sign-on process. <b>Default = 1</b> (enabled). Note that the default is effective only after reading a wnos.ini.  |              |               |   |                            |             |   |   |                     |
| FormURL=URL to a file             | URL to a sign-on window form or a bitmap filename displayed in the sign-on window under the Thin Client's home directory. <b>Default = Empty.</b>   |              |               |   |                            |             |   |   |                     |
| DefaultUser=username              | Default sign-on user. Note that this user name is displayed in the Sign-on dialog box and may be either used or replaced.   |              |               |   |                            |             |   |   |                     |

**Blazer Best Practices**

|   |  |
|---|--|
| <p>PnliteServer=<i>List of {IP address,DNS names}with optional port number for each entry</i></p> | <p>List of IP addresses or host names with optional TCP port number of PNLite servers. <b>Default=Empty</b>. Each entry with optional port is specified as Name-or-IP:port, where :port is optional; if not specified, port 80 is used as the default. If a port other than 80 is used, the port number must be specified explicitly with the server location in the form IP:port or name:port.</p> <p><b>Note:</b> This and the next command (DomainList) may be used in {username}.ini, but generally are used only in wnos.ini.</p> <p><b>Note:</b> The PNLite server list and associated domain list optionally may be entered in DHCP server options 181 and 182, If entered in both places, the wnos.ini and {username}.ini entries have precedence. However, {username}.ini will override wnos.ini if the identical commands (with different parameters) exist in {username}.ini.</p> |
| <p>DomainList=<i>List of NT domain names</i></p>  | <p>A list of domain names that will appear in the Thin Client's sign-on window as a selectable list to help users in selecting the domain to sign on to PNLite servers.</p>  |
| <p>PrinterMap=<i>a text file name (or possibly URL)</i></p>                                       | <p>A text file to be included to define printer mappings. Each line in the file is of format "Printer Identification"="Printer Driver Name". For example: "HL-1240 Series"="HP LaserJet"</p>   |
| <p>MaxVNCD={0, n}</p>   | <p>Version 4.3 and later only. <b>Default = 0</b>. Set to 0 to disable shadowing, or a non-zero absolute count of the number of concurrent VNC sessions. The maximum count value allowed is 5.</p>   |
| <p>TimeZone=zone [daylight = {yes, no}]<br/>[start=mmwwdd end=mmwwdd]</p>                         | <p>This statement is valid only if the zone is "Unspecified" on the terminal or with Manual Override option parameter.</p> <p>The allowable zones are 'GMT - 12:00' to 'GMT + 13:00' at one hour increments, and 'Greenwich Mean Time'.</p> <p>The option parameter Manual Override overrides the terminal System Preference Menu setting with this TimeZone wnos.ini file setting.</p> <p>The option parameter 'Daylight' is to enable/disable the daylight savings time. The 'mmwwdd' is a 6 digit number to specify the start and the end of daylight saving.</p> <p>mm - 01 to 12 for the month of the year from Jan. to Dec. 01 is January.</p> <p>ww - 01 to 04 for the week of the month. 01 is the first week. 05 is the last week.</p> <p>dd - 01 to 07 for the day in the week from Monday to Sunday. 01 is Monday. 07 is Sunday.</p>  |

**Blazer Best Practices**

|   |   |                     |  |             |      |             |        |             |      |   |     |   |     |   |   |   |   |   |           |  |
|---|---|---------------------|--|-------------|------|-------------|--------|-------------|------|---|-----|---|-----|---|---|---|---|---|-----------|--|
| TimeServer= SNTP server address   | Set an SNTP server in wnos.ini. For example:<br>TimeServer=132.237.209.171  |                     |  |             |      |             |        |             |      |   |     |   |     |   |   |   |   |   |           |  |
| Speedbrowser={on, off}  | Enables ICA 7.0 Speed screen Browser Acceleration Function. This feature is enabled by default.   |                     |  |             |      |             |        |             |      |   |     |   |     |   |   |   |   |   |           |  |
| <b>{username}.ini only</b>  |   |                     |  |             |      |             |        |             |      |   |     |   |     |   |   |   |   |   |           |  |
| <p>The command which is valid in {username}.ini only is the password command. If it is present, it must be the first command in the file. It is created and updated by the Thin Client; it is not inserted by the administrator. When the Change Password check box is checked in the log-in dialog box, the user is prompted for a new password. The Thin Client checks to ensure that the two copies of the password are the same, encrypts the password, places it at the beginning of the user's ini file (replacing any previous password command), and writes the file back to the FTP server. If the user forgets the password, the administrator may edit the appropriate ini file, delete the password command and save the result. Then the next time the user attempts to log in, no value should be placed in the password field of the log-in dialog box. Because the password is encrypted using a one-way algorithm, the original password value can not be recovered from the ini file. A new password must be created.</p> |   |                     |  |             |      |             |        |             |      |   |     |   |     |   |   |   |   |   |           |  |
| <b>Both wnos.ini and {username}.ini</b>   |   |                     |  |             |      |             |        |             |      |   |     |   |     |   |   |   |   |   |           |  |
| Inactive=# minutes  | <b>Default =0.</b> No Idle timeout, range = 10 minutes to 480 minutes   |                     |  |             |      |             |        |             |      |   |     |   |     |   |   |   |   |   |           |  |
| MouseSpeed=value  | <table border="0"> <tr> <td><b><u>Value</u></b></td> <td><b><u>Mouse Speed</u></b></td> </tr> <tr> <td>0</td> <td>Slow</td> </tr> <tr> <td>1 (default)</td> <td>Medium</td> </tr> <tr> <td>2</td> <td>Fast</td> </tr> </table>  | <b><u>Value</u></b> | <b><u>Mouse Speed</u></b>                            | 0           | Slow | 1 (default) | Medium | 2           | Fast |   |     |   |     |   |   |   |   |   |           |  |
| <b><u>Value</u></b>   | <b><u>Mouse Speed</u></b>   |                     |  |             |      |             |        |             |      |   |     |   |     |   |   |   |   |   |           |  |
| 0   | Slow  |                     |  |             |      |             |        |             |      |   |     |   |     |   |   |   |   |   |           |  |
| 1 (default)   | Medium  |                     |  |             |      |             |        |             |      |   |     |   |     |   |   |   |   |   |           |  |
| 2   | Fast  |                     |  |             |      |             |        |             |      |   |     |   |     |   |   |   |   |   |           |  |
| MouseSwap=value   | <table border="0"> <tr> <td><b><u>Value</u></b></td> <td><b><u>Mouse Swap</u></b></td> </tr> <tr> <td>0 (default)</td> <td>No</td> </tr> <tr> <td>1</td> <td>Yes</td> </tr> </table>  | <b><u>Value</u></b> | <b><u>Mouse Swap</u></b>                             | 0 (default) | No   | 1           | Yes    |             |      |   |     |   |     |   |   |   |   |   |           |  |
| <b><u>Value</u></b>   | <b><u>Mouse Swap</u></b>  |                     |  |             |      |             |        |             |      |   |     |   |     |   |   |   |   |   |           |  |
| 0 (default)   | No  |                     |  |             |      |             |        |             |      |   |     |   |     |   |   |   |   |   |           |  |
| 1   | Yes   |                     |  |             |      |             |        |             |      |   |     |   |     |   |   |   |   |   |           |  |
| RepeatDelay=value   | <table border="0"> <tr> <td><b><u>Value</u></b></td> <td><b><u>Keyboard Delay Before Repeat (Seconds)</u></b></td> </tr> <tr> <td>0</td> <td>1/5</td> </tr> <tr> <td>1</td> <td>1/4</td> </tr> <tr> <td>2 (default)</td> <td>1/3</td> </tr> <tr> <td>3</td> <td>1/2</td> </tr> <tr> <td>4</td> <td>3/4</td> </tr> <tr> <td>5</td> <td>1</td> </tr> <tr> <td>6</td> <td>2</td> </tr> <tr> <td>7</td> <td>No Repeat</td> </tr> </table> | <b><u>Value</u></b> | <b><u>Keyboard Delay Before Repeat (Seconds)</u></b> | 0           | 1/5  | 1           | 1/4    | 2 (default) | 1/3  | 3 | 1/2 | 4 | 3/4 | 5 | 1 | 6 | 2 | 7 | No Repeat |  |
| <b><u>Value</u></b>   | <b><u>Keyboard Delay Before Repeat (Seconds)</u></b>  |                     |  |             |      |             |        |             |      |   |     |   |     |   |   |   |   |   |           |  |
| 0   | 1/5   |                     |  |             |      |             |        |             |      |   |     |   |     |   |   |   |   |   |           |  |
| 1   | 1/4   |                     |  |             |      |             |        |             |      |   |     |   |     |   |   |   |   |   |           |  |
| 2 (default)   | 1/3   |                     |  |             |      |             |        |             |      |   |     |   |     |   |   |   |   |   |           |  |
| 3   | 1/2   |                     |  |             |      |             |        |             |      |   |     |   |     |   |   |   |   |   |           |  |
| 4   | 3/4   |                     |  |             |      |             |        |             |      |   |     |   |     |   |   |   |   |   |           |  |
| 5   | 1   |                     |  |             |      |             |        |             |      |   |     |   |     |   |   |   |   |   |           |  |
| 6   | 2   |                     |  |             |      |             |        |             |      |   |     |   |     |   |   |   |   |   |           |  |
| 7   | No Repeat   |                     |  |             |      |             |        |             |      |   |     |   |     |   |   |   |   |   |           |  |
| RepeatRate=value  | <table border="0"> <tr> <td><b><u>Value</u></b></td> <td><b><u>Keyboard Repeat Rate</u></b></td> </tr> <tr> <td>0</td> <td>Slow</td> </tr> <tr> <td>1 (default)</td> <td>Medium</td> </tr> <tr> <td>2</td> <td>Fast</td> </tr> </table>   | <b><u>Value</u></b> | <b><u>Keyboard Repeat Rate</u></b>                   | 0           | Slow | 1 (default) | Medium | 2           | Fast |   |     |   |     |   |   |   |   |   |           |  |
| <b><u>Value</u></b>   | <b><u>Keyboard Repeat Rate</u></b>  |                     |  |             |      |             |        |             |      |   |     |   |     |   |   |   |   |   |           |  |
| 0   | Slow  |                     |  |             |      |             |        |             |      |   |     |   |     |   |   |   |   |   |           |  |
| 1 (default)   | Medium  |                     |  |             |      |             |        |             |      |   |     |   |     |   |   |   |   |   |           |  |
| 2   | Fast  |                     |  |             |      |             |        |             |      |   |     |   |     |   |   |   |   |   |           |  |
| Include=path/filename   | Include another ".ini" file at the position of this command. Only one level of include is allowed (no nesting) and only for username.ini.   |                     |  |             |      |             |        |             |      |   |     |   |     |   |   |   |   |   |           |  |

**Blazer Best Practices**

|  |   |
|--|---|
| Resolution={ <i>setting</i> }  | Desktop display resolution. Use supported settings of 640X480, 800X600, 1024X768, and 1280X1024. If a resolution setting greater than the Thin Client local selection is entered, the Thin Client will operate at the lesser of the two.  |
| AutoPower={ <i>yes, no</i> }   | <p>Controls how the system starts when the power is first applied to the unit. If it is set to yes, the system starts itself up without waiting for users to press the power button only if power was lost unexpectedly (if the unit was shut down properly before power was removed, when power is restored the unit will remain powered off). This setting is useful in a kiosk environment. This is a new command with V4.2. The factory default is AutoPower=no.</p> <p>Once an AutoPower statement is processed, it alters the behavior of the Thin Client until a countermanding statement is processed. The affect of an AutoPower=yes statement continues even if the statement is removed from the ini file in which it was found.</p> <p>Use of the AutoPower option does not interfere with performing a user directed shutdown.</p> |
| AutoSignoff={ <i>yes, no</i> }   | Set to yes to automatically sign-off a user when the last opened session is closed.   |
| EnableLocal={ <i>yes, no</i> }   | Set to yes to enable locally-configured entries to show up in the <b>Connect Manager</b> list (for example, activate local entries). When connections defined in local NV-RAM are displayed in the Connection Manager, they are marked with an asterisk.  |
| Seamless={ <i>yes, no</i> }  | Controls the default setting for ICA connection parameters. If set to yes, then the default resolution for ICA published applications is set to Seamless. This is a command for V4.2 and later.   |
| ICABrowsing={ <i>udp, http</i> }   | Establishes the default browsing protocol. Default is "udp". This setting can be override by the HttpBrowsing={ <i>yes,no</i> } in each connection property. The method of browsing selected must match the method provided by the server(s) being accessed.  |
| Device=Wireless<br>Mode={Infrastructure, AdHoc}<br>SSID=ssid Channel={1-14}<br>WepKey={None, 1-4} Key1=k1<br>Key2=k2 Key3=k3 Key4=k4 | Defines wireless Ethernet device remotely and saves to the local NVRAM. Not all parameters are needed. For example, one may define Key1 to have a key of "k1" and leave out Key2 to Key4.   |

**Blazer Best Practices**

|   |   |
|---|---|
| <p>Printer=LPD Host= host<br/>Queue=queue<br/>[PrinterID=window_driver]<br/>[Enabled={yes, no}]</p>                               | <p>Defines an LPD printer. If the PrinterID is not specified, the default Generic/Text Only is used. If Enabled is not specified, the default is to enable the printer.</p> <p><b>Note:</b> The parameters must be specified in this order.</p>   |
| <p>Printer={COM1, COM2, LPT1, LPT2} Name=name<br/>[PrinterID=window_driver]<br/>[Enabled={yes, no}]<br/>[EnableLPD={yes, no}]</p> | <p>Configures local printers. The Name specifies the name of the printer and it is required. If the PrinterID is not specified, the default Generic/Text Only is used. If Enabled is not specified, the default is to enable the printer. If EnableLPD is not specified, the LPD service will not be enabled.</p> <p><b>Note:</b> The parameters must be specified in this order.</p> |

**Blazer Best Practices**

| <p>Privilege={None, Low, High}[LockDown={yes, no}]</p> | <p>Controls operator access to Thin Client resources:</p> <table border="0"> <thead> <tr> <th data-bbox="675 268 776 296"><u>Parameter</u></th> <th data-bbox="886 268 1068 296"><u>Operator Privileges</u></th> </tr> </thead> <tbody> <tr> <td data-bbox="675 302 727 329">None</td> <td data-bbox="886 317 1386 569"> <ul style="list-style-type: none"> <li>• The <b>System Setup</b> selection on the desktop menu is disabled; the <b>Setup</b> submenu cannot be displayed.</li> <li>• The <b>Connect Manager</b>, <b>Dialup Manager</b>, and <b>PPTP Manager</b> dialog boxes are disabled.</li> <li>• The <b>Reset the system setting to factory default</b> check box in the <b>sign-off/shutdown</b> dialog box is not available.</li> </ul> </td> </tr> <tr> <td data-bbox="675 583 829 667"> <b>Low</b><br/>(default, see note below)         </td> <td data-bbox="886 598 1406 850"> <ul style="list-style-type: none"> <li>• The <b>Network</b> selection on the <b>Setup</b> submenu is disabled (grayed out); the <b>Network Setup</b> dialog box cannot be displayed.</li> <li>• The <b>Reset the system setting to factory default</b> check box in the <b>sign-off/shutdown</b> dialog box is not available.</li> <li>• The <b>Connection Settings</b> dialog box (opened from <b>Connect Manager</b>) is readable but not writable.</li> </ul> </td> </tr> <tr> <td data-bbox="675 865 719 892">High</td> <td data-bbox="886 865 1354 892">No restrictions; all Thin Client resources are available.</td> </tr> <tr> <td data-bbox="675 947 769 974">LockDown</td> <td data-bbox="886 947 1406 1583"> <p>Optional parameter. The defined setting is locally stored (on the Thin Client) in flash. If LockDown=yes, a user with Privilege=Low or None is prevented from getting into protected capabilities even with the methods of unplugging the network cable or using the G-key reset</p> <p>Once a Lockdown statement is processed, it alters the behavior of the Thin Client until a countermanding statement is processed. The effect of using the Lockdown=yes option is persistent, spanning multiple reboots and removal of power from the Thin Client. Only encountering another Privilege statement with the option Lockdown=no will alter the behavior.</p> <p>Lockdown causes the specified privilege level to become persistent across reboots and power cycle operations. Any subsequent privilege command following a privilege command with a lockdown statement, but which does not have its own lockdown statement, will alter the privilege level but only temporarily.</p> <p><b>Default=no</b> (no lockdown).</p> </td> </tr> </tbody> </table> <p><b>Note:</b> The default parameter for Privilege varies depending on the environment. If the Thin Client finds and reads a wnos.ini file which does not contain a Privilege statement, the default privilege value is "low". If, however, no wnos.ini file is found, then the default privilege value is "high".</p> <p><b>Note:</b> If Privilege=None or Low, the <b>Network Setup</b> dialog box is disabled</p> <p><b>Note:</b> Stand-alone user mode does not make use of the .ini files.</p> | <u>Parameter</u> | <u>Operator Privileges</u> | None | <ul style="list-style-type: none"> <li>• The <b>System Setup</b> selection on the desktop menu is disabled; the <b>Setup</b> submenu cannot be displayed.</li> <li>• The <b>Connect Manager</b>, <b>Dialup Manager</b>, and <b>PPTP Manager</b> dialog boxes are disabled.</li> <li>• The <b>Reset the system setting to factory default</b> check box in the <b>sign-off/shutdown</b> dialog box is not available.</li> </ul> | <b>Low</b><br>(default, see note below) | <ul style="list-style-type: none"> <li>• The <b>Network</b> selection on the <b>Setup</b> submenu is disabled (grayed out); the <b>Network Setup</b> dialog box cannot be displayed.</li> <li>• The <b>Reset the system setting to factory default</b> check box in the <b>sign-off/shutdown</b> dialog box is not available.</li> <li>• The <b>Connection Settings</b> dialog box (opened from <b>Connect Manager</b>) is readable but not writable.</li> </ul> | High | No restrictions; all Thin Client resources are available. | LockDown | <p>Optional parameter. The defined setting is locally stored (on the Thin Client) in flash. If LockDown=yes, a user with Privilege=Low or None is prevented from getting into protected capabilities even with the methods of unplugging the network cable or using the G-key reset</p> <p>Once a Lockdown statement is processed, it alters the behavior of the Thin Client until a countermanding statement is processed. The effect of using the Lockdown=yes option is persistent, spanning multiple reboots and removal of power from the Thin Client. Only encountering another Privilege statement with the option Lockdown=no will alter the behavior.</p> <p>Lockdown causes the specified privilege level to become persistent across reboots and power cycle operations. Any subsequent privilege command following a privilege command with a lockdown statement, but which does not have its own lockdown statement, will alter the privilege level but only temporarily.</p> <p><b>Default=no</b> (no lockdown).</p> |
|--|--|------------------|----------------------------|------|--|---|--|------|---|----------|--|
| <u>Parameter</u>                                       | <u>Operator Privileges</u>   |                  |                            |      |  |   |  |      |   |          |  |
| None   | <ul style="list-style-type: none"> <li>• The <b>System Setup</b> selection on the desktop menu is disabled; the <b>Setup</b> submenu cannot be displayed.</li> <li>• The <b>Connect Manager</b>, <b>Dialup Manager</b>, and <b>PPTP Manager</b> dialog boxes are disabled.</li> <li>• The <b>Reset the system setting to factory default</b> check box in the <b>sign-off/shutdown</b> dialog box is not available.</li> </ul>   |                  |                            |      |  |   |  |      |   |          |  |
| <b>Low</b><br>(default, see note below)                | <ul style="list-style-type: none"> <li>• The <b>Network</b> selection on the <b>Setup</b> submenu is disabled (grayed out); the <b>Network Setup</b> dialog box cannot be displayed.</li> <li>• The <b>Reset the system setting to factory default</b> check box in the <b>sign-off/shutdown</b> dialog box is not available.</li> <li>• The <b>Connection Settings</b> dialog box (opened from <b>Connect Manager</b>) is readable but not writable.</li> </ul>   |                  |                            |      |  |   |  |      |   |          |  |
| High   | No restrictions; all Thin Client resources are available.  |                  |                            |      |  |   |  |      |   |          |  |
| LockDown   | <p>Optional parameter. The defined setting is locally stored (on the Thin Client) in flash. If LockDown=yes, a user with Privilege=Low or None is prevented from getting into protected capabilities even with the methods of unplugging the network cable or using the G-key reset</p> <p>Once a Lockdown statement is processed, it alters the behavior of the Thin Client until a countermanding statement is processed. The effect of using the Lockdown=yes option is persistent, spanning multiple reboots and removal of power from the Thin Client. Only encountering another Privilege statement with the option Lockdown=no will alter the behavior.</p> <p>Lockdown causes the specified privilege level to become persistent across reboots and power cycle operations. Any subsequent privilege command following a privilege command with a lockdown statement, but which does not have its own lockdown statement, will alter the privilege level but only temporarily.</p> <p><b>Default=no</b> (no lockdown).</p>   |                  |                            |      |  |   |  |      |   |          |  |

**Blazer Best Practices**

| <p>Desktop=<i>bitmap file</i><br/>[Layout={<i>center, tile</i>}]</p>   | <p>The Desktop command specifies a bitmap file to be used as wallpaper for the local desktop. This file could be a 4-, 8-, or 24-bit BMP file or a standard GIF file or a standard JPEG file. The file must be located in the FTP server wnos\bitmap directory. <b>Default is no wallpaper.</b></p> <p>Layout is a parameter of the Desktop command. It specifies the arrangement on the desktop background of the bitmap file specified by the Desktop command. For the <i>tile</i> selection, the image is replicated across the desktop. <b>Default = center.</b></p>  |              |                              |   |       |    |            |                     |            |    |            |    |        |     |         |     |         |
|--|---|--------------|------------------------------|---|-------|----|------------|---------------------|------------|----|------------|----|--------|-----|---------|-----|---------|
| <p>DeskColor="<i>rrr ggg bbb</i>"</p>  | <p>Specifies the desktop background color in RGB string format (must be enclosed in quotes), where <i>rrr</i>, <i>ggg</i>, and <i>bbb</i> are decimal numbers in the range of 0 to 255. <b>Default = "16 100 36"</b> (green).</p>   |              |                              |   |       |    |            |                     |            |    |            |    |        |     |         |     |         |
| <p>ShutdownCounter=# seconds</p>   | <p><b>Default = 10.</b> Specifies the number of seconds to count down before the shutdown sequence starts upon user pressing of the Thin Client power button when there are active sessions (Maximum value =60). Set the value to 0 to commence shutdown immediately and prevent display of the countdown pop-up dialog box.</p>  |              |                              |   |       |    |            |                     |            |    |            |    |        |     |         |     |         |
| <p>NetworkPrinter="<i>host / queue</i>"<br/>[PrinterID="<i>Window driver name</i>"]<br/>[Enabled={<i>yes, no</i>}]</p> | <p>Specifies the configuration for the network (LPD) printer in the same way as described for the <b>Printer Setup Dialog Box</b> in the <i>Winterm 1000 Series Thin Client Users Guide</i>. The <i>host</i> and <i>queue</i> parameters define the IP address and queue name of the printer; <i>PrinterID</i> defines the Windows printer driver name; <i>Enabled</i> is optional with the <b>default = yes.</b></p>   |              |                              |   |       |    |            |                     |            |    |            |    |        |     |         |     |         |
| <p>ScreenSaver=value<br/>[LockTerminal={<i>yes, no</i>}]<br/>[SoftSaver={<i>yes, no</i>}]</p>                          | <table border="0"> <thead> <tr> <th><u>Value</u></th> <th><u>Delay Before Starting</u></th> </tr> </thead> <tbody> <tr> <td>0</td> <td>Never</td> </tr> <tr> <td>10</td> <td>10 Minutes</td> </tr> <tr> <td><b>20</b> (default)</td> <td>20 Minutes</td> </tr> <tr> <td>30</td> <td>30 Minutes</td> </tr> <tr> <td>60</td> <td>1 Hour</td> </tr> <tr> <td>120</td> <td>2 Hours</td> </tr> <tr> <td>180</td> <td>3 Hours</td> </tr> </tbody> </table> <p>The optional parameter LockTerminal puts the terminal in LOCK state when the screen saver is activated. The user will be prompted with an Unlock Terminal dialog box to enter the sign-on password. Note: the user must be signed on with a password for this action to take effect.</p> <p>The optional parameter SoftSaver specifies to use the soft screen saver rather than the default of turning off the monitor.</p> | <u>Value</u> | <u>Delay Before Starting</u> | 0 | Never | 10 | 10 Minutes | <b>20</b> (default) | 20 Minutes | 30 | 30 Minutes | 60 | 1 Hour | 120 | 2 Hours | 180 | 3 Hours |
| <u>Value</u>   | <u>Delay Before Starting</u>  |              |                              |   |       |    |            |                     |            |    |            |    |        |     |         |     |         |
| 0  | Never   |              |                              |   |       |    |            |                     |            |    |            |    |        |     |         |     |         |
| 10   | 10 Minutes  |              |                              |   |       |    |            |                     |            |    |            |    |        |     |         |     |         |
| <b>20</b> (default)  | 20 Minutes  |              |                              |   |       |    |            |                     |            |    |            |    |        |     |         |     |         |
| 30   | 30 Minutes  |              |                              |   |       |    |            |                     |            |    |            |    |        |     |         |     |         |
| 60   | 1 Hour  |              |                              |   |       |    |            |                     |            |    |            |    |        |     |         |     |         |
| 120  | 2 Hours   |              |                              |   |       |    |            |                     |            |    |            |    |        |     |         |     |         |
| 180  | 3 Hours   |              |                              |   |       |    |            |                     |            |    |            |    |        |     |         |     |         |

**Blazer Best Practices**

|   |  |  |
|---|--|--|
| DisableMouse= <i>value</i>  | <p><b><u>Value</u></b><br/> <b>0</b> (default)<br/> <b>1</b></p>   | <p><b><u>Disabled</u></b><br/> No<br/> Yes - mouse is disabled and no mouse pointer is shown on the screen. The pointer is enabled if any mouse activity occurs.</p>   |
| <p>Language=<i>description</i></p> <p><b>Or</b></p> <p>Language=<i>code</i></p> | <p><b><u>Description</u></b></p> <p>Brazilian<br/> Canadian Multilingual<br/> Chinese (Simplified)<br/> Chinese (Traditional)<br/> Croatian<br/> Czech<br/> Danish<br/> Dutch<br/> English (Australian)<br/> English (3270 Australian)<br/> English (United Kingdom)<br/> English (United States)<b>default</b><br/> Finnish<br/> French (Belgian)<br/> French (Canadian)<br/> French (France)<br/> French (Swiss)<br/> German<br/> German (Swiss)<br/> Hungarian<br/> Italian<br/> Italian (Swiss)<br/> Japanese<br/> Korean<br/> Norwegian<br/> Polish<br/> Polish Programmer<br/> Portuguese<br/> Romanian<br/> Slovakian<br/> Slovenian<br/> Spanish<br/> Spanish (Mexican)<br/> Swedish<br/> Turkish<br/> Turkish (QWERTY)<br/> U. S. International</p> | <p><b><u>Code</u></b></p> <p>br<br/> ca_ml<br/> gb<br/> b5<br/> croat<br/> cz<br/> dk<br/> nl<br/> au<br/> au3270<br/> uk<br/> <b>us</b><br/> fi<br/> fr_be<br/> fr_ca<br/> fr<br/> fr_sf<br/> de<br/> de_sg<br/> hu<br/> it<br/> it142<br/> jp<br/> ko<br/> no<br/> pl<br/> pl_prog<br/> pt<br/> ro<br/> slovak<br/> sloven<br/> es<br/> la<br/> se<br/> turk<br/> turk_q<br/> us_int</p> |

**Blazer Best Practices**


|  |  |
|--|--|
| PNLiteServer=List of IP addresses or DNS names with optional port number | PNLite server list. Successive server entries must be delimited by commas and port numbers delimited from their servers by the colon. Enclose in quotation marks if spaces are included. For example: PNLiteServer="132.237.176.80:8082, test-server:80"   |
| DomainList=List of domain names used at the PNLite sign-on window        | Enclose in quotation marks if spaces are included. For example: DomainList="North_America, SQA, test-domain"   |
| Connect={ICA, RDP}   | Connection protocol. Follow the selections from the following ICA/RDP parameter list below. Parameters marked with an asterisk "*" are mandatory. All connect parameters for each connection must be on the same logical line (\ may be used for line continuation - see rules above).   |
| LongApplicationName={yes,no}   | Support up to 30 characters in published application name on connection manager items, and the length of icon texts on the desktop.  |
| Vncprompt={1, 0}   | <p>A VNC shadow permission prompt. A user can accept or decline VNC shadowing on a prompt window before the client desktop is shadowed.</p> <p>In [user].ini file under /ini/ directory there is an entry<br/>vncprompt=1<br/>or<br/>vncprompt=0</p> <p>Set to 1 means the user will always be prompted before shadowing starts. <b>Default = 1</b> (by default, the user will always be prompted). The user will then choose to decline or accept VNC shadowing.</p> <p>Set to 0 means the user will not be prompted before shadowing starts, and therefore, will not be able to decline or accept shadowing.</p> |

**ICA/RDP Connect Parameter List**

|                                    |   |
|------------------------------------|---|
| Browserip= <i>list of browsers</i> | <b>ICA Only.</b> List of IP addresses or DNS registered names to specify ICA browsers list. List items must be separated by semicolons or commas. |
| Alternate={no, yes} or {0, 1}      | <b>ICA Only.</b> Yes/no choice to use an alternate IP address returned from an ICA master browser to get through firewalls. <b>Default = no.</b>  |
| HttpBrowsing={no, yes}             | <b>ICA Only.</b> Select browsing protocol. Set to 0 for UDP, 1 for HTTP.  |
|                                    | Note that this command is used to override the default method of browsing established in the  |

|  | ICABrowsing command.   |                         |               |               |   |           |                                     |                   |   |
|--|--|-------------------------|---------------|---------------|---|-----------|-------------------------------------|-------------------|---|
| * Host={name, IP}                                | A list of servers' hostnames or IP addresses. The Thin Client attempts to connect to the next server on the list if the previous attempt failed. List items must be separated by semicolons or commas.   |                         |               |               |   |           |                                     |                   |   |
| <b>Or</b>  |  |                         |               |               |   |           |                                     |                   |   |
| * Application= <i>published application</i>      | <b>ICA Only.</b> Published application to launch. Required if no host is specified.  |                         |               |               |   |           |                                     |                   |   |
| Description= <i>string description</i>           | Connection description. Enclose in quotation marks if there are embedded blanks. For quotation marks, use common-practice nesting rules. Up to 19 characters are allowed for this entry.   |                         |               |               |   |           |                                     |                   |   |
| Autoconnect={no, yes} <b>or</b> {0, 1}           | Yes/no choice to start connection automatically after sign-on if enabled. <b>Default = no.</b>   |                         |               |               |   |           |                                     |                   |   |
| Reconnect={Yes, No, seconds}                     | Controls automatic reconnection to an application server after a disconnection:  |                         |               |               |   |           |                                     |                   |   |
|  | <table border="0"> <thead> <tr> <th data-bbox="820 997 974 1060"><u>Parameter/ Value</u></th> <th data-bbox="1039 997 1128 1029"><u>Action</u></th> </tr> </thead> <tbody> <tr> <td data-bbox="820 1071 974 1113">Yes (Default)</td> <td data-bbox="1039 1071 1372 1218">Immediately restart the connection 20 seconds after a disconnect. <b>Default</b> for reconnect is <b>20 seconds</b>.</td> </tr> <tr> <td data-bbox="820 1228 974 1270"><b>No</b></td> <td data-bbox="1039 1228 1372 1291">No reconnection after a disconnect.</td> </tr> <tr> <td data-bbox="820 1302 974 1375">seconds (integer)</td> <td data-bbox="1039 1302 1372 1480">Interval to wait (in seconds) before automatically restarting the connection after disconnection. Valid range is 1 to 3600.</td> </tr> </tbody> </table> | <u>Parameter/ Value</u> | <u>Action</u> | Yes (Default) | Immediately restart the connection 20 seconds after a disconnect. <b>Default</b> for reconnect is <b>20 seconds</b> . | <b>No</b> | No reconnection after a disconnect. | seconds (integer) | Interval to wait (in seconds) before automatically restarting the connection after disconnection. Valid range is 1 to 3600. |
| <u>Parameter/ Value</u>                          | <u>Action</u>  |                         |               |               |   |           |                                     |                   |   |
| Yes (Default)                                    | Immediately restart the connection 20 seconds after a disconnect. <b>Default</b> for reconnect is <b>20 seconds</b> .  |                         |               |               |   |           |                                     |                   |   |
| <b>No</b>  | No reconnection after a disconnect.  |                         |               |               |   |           |                                     |                   |   |
| seconds (integer)                                | Interval to wait (in seconds) before automatically restarting the connection after disconnection. Valid range is 1 to 3600.  |                         |               |               |   |           |                                     |                   |   |
| Encryption={None, Basic, 40, 56, 128, Login-128} | Connection security level. The highest level is 128-bit security (Login-128 option is 128 bit encryption for login only, and is only available for ICA). The lowest is None. <b>Default is Basic.</b>  |                         |               |               |   |           |                                     |                   |   |
| Fullscreen={no, yes} <b>or</b> {0, 1}            | <b>Note:</b> The server must support the specified level of encryption or the connection will fail.<br>Yes/no choice to run the session full screen. <b>Default = no</b> (session runs in a windowed screen).  |                         |               |               |   |           |                                     |                   |   |

|  |   |
|--|---|
| Colors={256, high}                                 | <p>Session color mode. <b>Default = High</b>. For faster display performance, use 256 colors for the session.</p> <p><b>Note:</b> Although the default is high colors, older ICA servers may not support the high mode. In this case, the Thin Client will negotiate with the server and run the session in the 256 color mode (high colors in ICA requires that the server be running MetaFrame 1.8 FR2 or higher). There is continued support for 64k colors.</p> <p>The Thin Client supports high colors for RDP as long as the server supports RDP version 5 or higher.</p> |
| NoReducer={no, yes}                                | <p>Set to yes to turn off display compression.</p>  |
| Lowband={no, yes} or {0,1}                         | <p>Yes/no choice to enable/not enable optimization for low-speed connections, such as reducing audio quality and/or decreasing protocol-specific cache size. <b>Default = no</b> (disabled).</p>  |
| Resolution=[640x480, 800x600, 1024x768, 1280x1024] | <p>Maximum connection resolution. Use this setting to restrict the highest resolution for connections. The Thin Client will operate at the lesser of this setting and resolution specified at the connection entry.</p>   |
| Username=[username, \$SN, \$MAC, \$IP, \$UN, \$P]  | <p>Name to log on to the application server. Either a conventional log-on name may be used or a variable may be used. Up to 31 characters are allowed for this entry.</p>   |
| <u>Parameter</u>                                   | <u>Value</u>  |
| username   | Conventional log-on name  |
| \$SN   | Device serial number used   |
| \$MAC  | Device MAC address used   |
| \$IP   | Device IP Address used  |
| \$UN   | Device sign-on name used  |
| \$PW   | Device sign-on password used  |

| <p>Password={<i>password, \$SN, \$MAC, \$IP, \$UN, \$PW</i>}</p> | <p>Password to log on to the application server. Either a conventional password may be used or a variable may be used. Up to 19 characters are allowed for this entry.</p>  |                  |              |          |                              |      |                           |       |                         |      |                        |      |                          |      |                              |
|--|---|------------------|--------------|----------|------------------------------|------|---------------------------|-------|-------------------------|------|------------------------|------|--------------------------|------|------------------------------|
| <p>Domainname={<i>domain name,\$DN</i>}</p>                      | <table border="0"> <thead> <tr> <th><u>Parameter</u></th> <th><u>Value</u></th> </tr> </thead> <tbody> <tr> <td>password</td> <td>Conventional log-on password</td> </tr> <tr> <td>\$SN</td> <td>Device serial number used</td> </tr> <tr> <td>\$MAC</td> <td>Device MAC address used</td> </tr> <tr> <td>\$IP</td> <td>Device IP Address used</td> </tr> <tr> <td>\$UN</td> <td>Device sign-on name used</td> </tr> <tr> <td>\$PW</td> <td>Device sign-on password used</td> </tr> </tbody> </table> <p> <b>CAUTION</b> The application server password is not encrypted; it is strongly recommended not to specify it. The user will be prompted to enter the password when the connection is made. This application server password directive never starts a line so it can be distinguished from the Thin Client user sign-on password, which starts a line.</p> <p>Domain name in a Windows network. Up to 19 characters are allowed for this entry. \$DN specifies that the Thin Client sign-on domain name is used.</p> | <u>Parameter</u> | <u>Value</u> | password | Conventional log-on password | \$SN | Device serial number used | \$MAC | Device MAC address used | \$IP | Device IP Address used | \$UN | Device sign-on name used | \$PW | Device sign-on password used |
| <u>Parameter</u>   | <u>Value</u>  |                  |              |          |                              |      |                           |       |                         |      |                        |      |                          |      |                              |
| password   | Conventional log-on password  |                  |              |          |                              |      |                           |       |                         |      |                        |      |                          |      |                              |
| \$SN   | Device serial number used   |                  |              |          |                              |      |                           |       |                         |      |                        |      |                          |      |                              |
| \$MAC  | Device MAC address used   |                  |              |          |                              |      |                           |       |                         |      |                        |      |                          |      |                              |
| \$IP   | Device IP Address used  |                  |              |          |                              |      |                           |       |                         |      |                        |      |                          |      |                              |
| \$UN   | Device sign-on name used  |                  |              |          |                              |      |                           |       |                         |      |                        |      |                          |      |                              |
| \$PW   | Device sign-on password used  |                  |              |          |                              |      |                           |       |                         |      |                        |      |                          |      |                              |
| <p>Directory=<i>working directory</i></p>                        | <p>A directory to be used as the working directory after logging on to the server. This entry is limited to 63 characters.</p>  |                  |              |          |                              |      |                           |       |                         |      |                        |      |                          |      |                              |
| <p>Command=<i>start command</i></p>                              | <p>A string of commands to be executed after logging on to the server. This entry is limited to 127 characters.</p>   |                  |              |          |                              |      |                           |       |                         |      |                        |      |                          |      |                              |
| <p>Icon={<i>default, bitmap file</i>}</p>                        | <p>Specifies an icon to appear on the Thin Client desktop for this connection. Use <i>default</i> to display a system default icon for this connection. For another icon, enter the name (with extension) of the bitmap file and ensure that the file is located in the FTP server wnos\bitmap directory. <b>If not specified here and the icon is not specified by a PNLite server, no icon is displayed for this connection.</b></p>  |                  |              |          |                              |      |                           |       |                         |      |                        |      |                          |      |                              |
| <p>LocalCopy={<i>no, yes</i>}</p>                                | <p>Set to yes to save the connection to the local NVRAM. The “description” field is used as the index key into the local connection table. If a match is found, then the entry is updated. Otherwise, a new entry is created. Note: there are a total of 16 local entries.</p>  |                  |              |          |                              |      |                           |       |                         |      |                        |      |                          |      |                              |