

## 1000 Series (Blazer) Setup

### Introduction:

The 1000 series works best as a stateless device. This is not the only environment in which it will operate, but by far the most optimum. In order for the 1200LE to be utilised as a stateless device one needs to have FTP available and DHCP can also be used (although is not required in order for FTP to function). Alternatively the 1200LE can operate in a manually configured mode. Please note that throughout this document the 1000 series device that you are configuring will be referred to as 'the unit'.

### Concept:

**FTP:** The FTP server will hold firmware upgrades/downgrades and .ini files that can store settings relating to both the unit as a whole (resolution, firmware upgrade controls etc) and user specific settings, you can have the unit prompt for a local login on boot which will then relate to a username.ini file on your FTP server. This is useful if you wish to only allow administrative privileges to certain staff members or want to show different ICA/RDP connections to different users.

**DHCP:** You can use DHCP option tags to pass the File Server and path information to the unit so that you do not have to configure this manually for each unit you deploy. This means that you really can plug and play when deploying the units into a new environment.

### Implementation:

When implementing this solution you will have the following 3 options:

- Implement the solution as standalone. This does not require any FTP server or DHCP server to be configured but all configuration and changes will have to be made on a per unit basis and will have to be carried out at the unit itself. This is detailed in step 2.
- Implement an FTP only solution. This will require that you carry out steps 1 and 2, you will also need to visit the units individually to configure the file server/path entries as mentioned in the steps.
- Implement an FTP and DHCP option tag solution. This will require that you carry out steps 1, 2 and 3. This will offer a true plug and play deployment option which is especially useful for large or widespread implementations.

#### 1. FTP Server:

The FTP Server will be the repository for the firmware, default configurations and user configurations if this has been set.

- Navigate to your ftp root directory. (If you are using IIS it is normally c:\inetpub\ftproot )
- Create a sub directory called wyse
- Create a sub directory under wyse called wnos
- Save your wnos.ini file and firmware in this directory
- If you have received this file as part of a .zip file then you may find that you have the latest firmware (utc\_b512 for 1200LE, twa\_wnos for 1125SE and STP\_wnos for 1200Plus) and wnos.ini file examples included. If not, you can find sample .ini files at the following URL:

<http://www.wyse.com/products/winterm/quickstart/1000.htm>

You can find the latest firmware at the following URL:

<http://support.wyse.com/1000Series/index.htm>

And you can find a document explaining all the available wnos.ini commands at the following URL:

[ftp://194.70.213.21/Support/External/Documentation/1000/Commands%20List/4.4/wnos\\_ini\\_commands\\_list.doc](ftp://194.70.213.21/Support/External/Documentation/1000/Commands%20List/4.4/wnos_ini_commands_list.doc)

## 1000 Series (Blazer) Setup

### 2. DHCP/Network Configuration:

If you do NOT intend to use DHCP Option Tags:

If you do not want to use DHCP option tags or you are using Static IP addressing, set the Following on the 1200LE:

- Right click mouse and select SYSTEM SETUP
- Select NETWORK
- Complete all relevant details. If you are using static IP Addressing then you will need to enter the following:
  - IP Address (required)
  - Subnet Mask (required)
  - Default Gateway (required)
  - DNS Domain (optional, depending on your environment)
  - DNS Servers (optional, depending on your environment)
  - WINS Servers (optional, depending on your environment)
  - File Server/Path (Required if using the FTP configuration and not the DHCP option tags , please see below for details)
  - Username – anonymous
  - Password – guest
  - PN Agent/Lite servers (Optional Citrix configuration)
  - Rapport Servers (Optional Management configuration)
- **FTP Configuration:**
  - FILE SERVER/PATH - This will be the FTP Server. Including the directory Structure from within FTPRoot, for example 192.168.1.1/Wyse

The screenshot shows a 'Network Setup' dialog box with the following fields and values:

- No local Ethernet, Modem dialup only
- No local LAN, invoke PPPoE only
- Dynamically allocated over DHCP / BOOTP
- Statically specified IP Address
  - IP Address: 0.0.0.0
  - Subnet Mask: 0.0.0.0
- Ethernet Speed: 100 Mb Half-Dup
- Default Gateway: 0.0.0.0
- DNS Domain:
- DNS Servers:
- WINS Servers:
- File Servers/Path:
- Username: anonymous
- Password: \*\*\*\*\*
- PN Agent/Lite Servers:
- Rapport Servers:

3. If you DO wish to use DHCP option tags you will need to configure the following:

- 161 - This is the FTP servers IP address
- 162 - FTP directory, set this to /Wyse

Please see below for instructions on how to add these tags:

From the DHCP Server:

## 1000 Series (Blazer) Setup

- Right-click My Computer and select **Manage**
- Expand **Servers and Applications**
- Highlight DHCP and click **Action | Set Predefined Options**
- You should now be looking at the *Predefined Options and Values* screen

**Predefined Options and Values**

Option class: DHCP Standard Options

Option name: 002 Time Offset

Add... Edit... Delete

Description: UCT offset in seconds

Value

Long: 0x0

OK Cancel

- From here, click **Add**
- Type the following information in so that it looks similar to this screen:

**Option Type**

Class: Global

Name: FTPServer

Data type: String  Array

Code: 161

Description:

OK Cancel

- Click **OK**
- From the *Predefined Options and Values* screen, click **Add**
- Type the following information in so that it looks like this:

**Option Type**

Class: Global

Name: FTPDirectory

Data type: String  Array

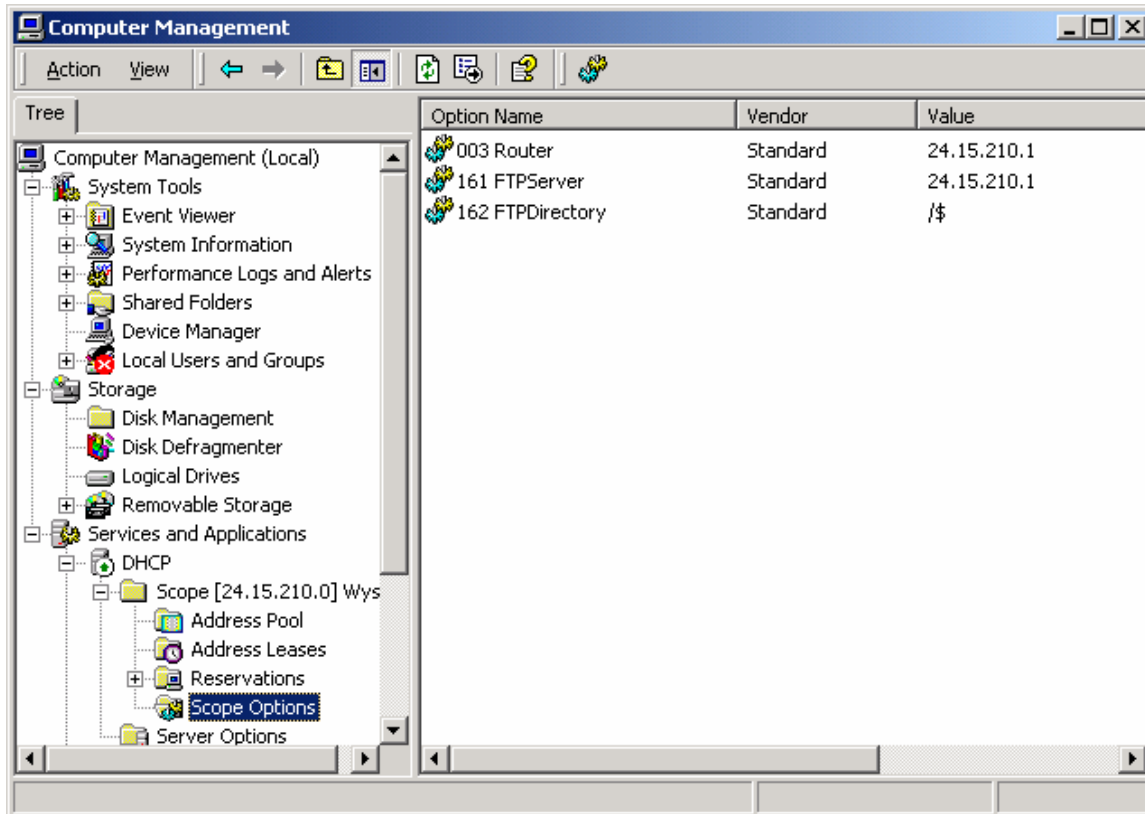
Code: 162

Description:

OK Cancel

## 1000 Series (Blazer) Setup

- Click **OK**
- From the *Predefined Options and Values* screen, select the Option Name pulldown arrow and scroll down and highlight **161 FTPServer**
- In the *Value String* field, type in the FTP server's IP address or name
- Now look for and highlight **162 FTPDirectory**
- In the *Value String* field, type in the following: /\$  
Note: this instructs the 1200LE to start from the FTP root directory and use the default Wyse path
- Click **OK**
- Now these two tags need to be added to the DHCP scope like so:



This completes the DHCP server configuration

### Troubleshooting Tips:

#### Symptom

Unit not able to read wnos.ini file

#### Resolution

Ensure that you are allowing anonymous permissions under FTP  
If you are using IIS6.0 ensure banner messages are disabled under FTP

Unit is reading wnos.ini but not updating firmware

Ensure you have a firmware file under ftproot/wyse/wnos  
Ensure it the firmware file has not been renamed since downloading  
Ensure you have 'autoload=1' or 'autoload=2' specified in your wnos.ini file

wnos.ini file settings are not all being applied

From the unit, go to Desktop - System Information - Event Log and check to see if there are any errors reported